

OCONEE COUNTY SUBDIVISION CERTIFICATIONS

I hereby certify that the streets, utilities and other required improvements in this subdivision have been installed in an acceptable manner and meet all the requirements of the Land Subdivision Regulations of Oconee County, Georgia.

6/12/1977

[Signature]
 Chairman, Board of Commissioners of Oconee County

I hereby certify that the subdivision plot shown hereon has been found to comply with the Land Subdivision Regulations of Oconee County, Ga and that it has been approved by the Oconee Co. Planning Commission for recording in the Office of the Clerk of Superior Court of Oconee Co., Ga.

Date 6-17-1977

[Signature]
 Secretary, Oconee Co. Planning Comm.
 Chairman, Oconee Co. Planning Comm.

I (we) hereby certify that I (we) accept the plan of subdivision, establish the minimum building setback lines, and indicate all streets, drives, sidewalks and other open spaces to public use of notes.

Date 6-17-1977

[Signature]
 Owner

It is hereby certified that this Plat is true and correct and was prepared from an actual survey of the property by me or under my supervision, that all monuments shown hereon actually exist or are marked "future" and their location, size, type, and material are correctly shown, and that all engineering requirements of the Land Subdivision Regulations of Oconee County, Georgia have been fully complied with.

By *[Signature]*
 Reg. Co. Clerk Superior Court

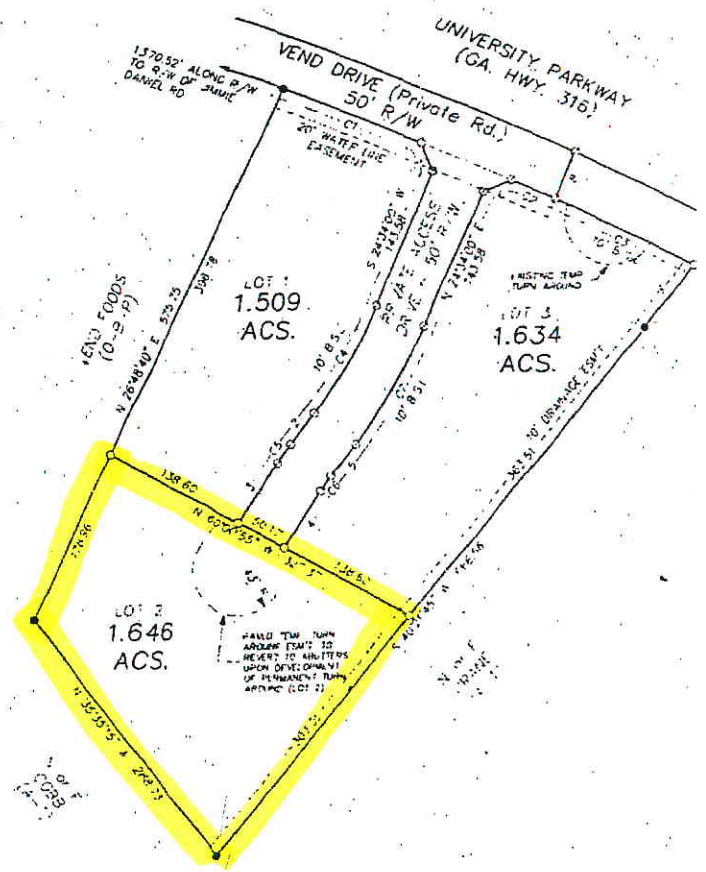
I hereby certify that the all sewerage collection and disposal system is adequate, meets the health Department's

Lot Number 1-3

private sewage disposal by

Date 6-17-1977

[Signature]
 Health Officer



- GENERAL NOTES:
- 2) THIS PROPERTY IS PRESENTLY ZONED R-2
 - 3) ADJUTING PROPERTY ZONED AS SHOWN
 - 4) TOTAL AREA IN DEVELOPMENT (THIS PLAT) EXCLUDES ROAD R/W 4.789 ACS
 - 5) 3 LOTS (THIS PLAT)
 - 6) SMALLEST LOT : 1.509 ACS
 AVERAGE LOT : 1.596 ACS
 - 7) SEWER PROVIDED BY INDIVIDUAL SEPTIC TANKS
 - 8) WATER PROVIDED BY OCONEE CO. WATER SYSTEM
 - 9) OWNER : J.D. LTD NO 1
 1351 JENNINGS WILL RD
 BUILDING 500-A
 BOWART, GA 30622
 - 10) SETBACKS: FRONT 35' FROM C.V.
 SIDE 10'
 REAR 10'

CURVE	BEARING	CHORD	ARC	RADIUS
C1	S 67°14'00" E	144.31	144.35	4403.64
C2	S 64°48'00" E	43.98	43.98	4403.64
C3	S 63°32'00" E	121.04	121.04	4403.64
C4	S 31°26'00" W	222.03	222.03	425.00
C5	S 36°59'00" W	22.48	22.50	175.00
C6	N 36°59'00" E	18.41	18.41	225.00
C7	N 31°26'00" E	134.91	135.05	425.00